

MATRIX7



Today you must find new and innovative ways to improve your business, like integrating Matrix 3D Jewelry Design Software from Gemvision. By harnessing the power of 3D CAD (Computer Aided Design) and making it jeweler-friendly, Matrix lets you design virtual 3D jewelry on-screen while generating a detailed color preview image that can be printed or emailed. Matrix then outputs all file types compatible with any CAM (Computer Aided Manufacturing) device including Gemvision's **Revo540C Milling System** which generates dimensionally accurate models ready for casting. This total solution is leading the CAD/CAM revolution. **The benefits of integrating Matrix software into your business include...**

- Create your own look with unique designs
- Stand out from your competition
- Create 100% dimensionally accurate jewelry
- Allow your customer to SEE the piece before it exists
- Increase cash flow by creating virtual inventory
- Increase profit margins through unique designs
- Take advantage of profitable niche markets
- Rely on exceptional Gemvision **Technical Support, Training,** and online **Users Forum** to help you every step of the way

**All of the features
below are from
Matrix 6.3.**

Discover the new features
in Version 7 by visiting
www.gemvision.com/m7

Now accepting orders for the NEW Matrix

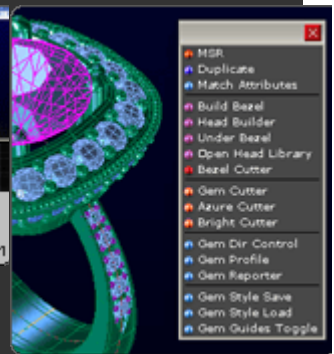
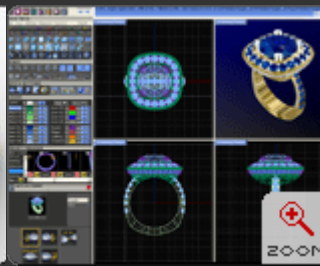
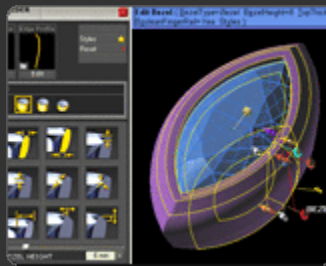
7.Featuring integrated T-Splines technology and the most advanced V-Ray rendering system ever developed!

Discover What's New

Click to watch the
Computer Aided Creativity
Video featuring **Matrix 6**
18.4MB



Click to learn more
about **Matrix 6** and
see an X-Ray View of a
Matrix model to learn
how Matrix quickly and
easily built each part



Getting All the Details Just Right

It's a big part of why Matrix out-performs anything else on the market. Creating a great design – not just a good one – is the result of an eye for design coupled with the ability to explore and refine to make it just right. If these details are not easily realized, the design is kept from reaching its full potential. Matrix 6 does it all – creativity, speed, and precision –

Powerful Gem Tools

Matrix 6 offers the largest array of tools for laying out and adjusting gems. Scale, rotate, and move all from one easy set of tools. And the sophisticated new Pave tool allows beautiful flowing patterns over the most demanding surfaces.

Click to Zoom Interface Design

The new Matrix interface simplifies and unites the appearance and usability of the program. And when using specific tools, we have found that people use a variety of methods to work: some people like to type; others like to interact with the model directly onscreen; while still others click on buttons and icons. One thing is for sure: there is not a single best way! That's why most functions in Matrix offer all three methods to choose from.

Pre-Sorted Tools

While gathering input from existing users, we found they were asking for tools that were already part of the program. So why is it that even advanced users didn't know where to find these tools? Simple: people become accustomed to using any software in a certain way, performing even new tasks using familiar

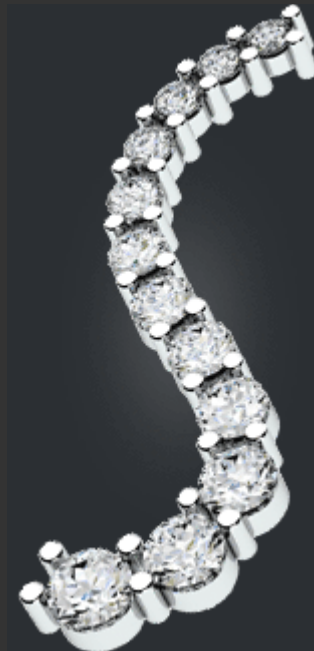
by providing tools and methods that only jewelers need.

Computer Aided Creativity

Over two years in the making, Matrix Version 6 offers a new way of designing jewelry no other software even comes close to. Utilizing years of input from the best CAD modelers in the industry and our development team, Matrix provides the fastest way to replicate existing designs while allowing that process to take creative paths.

Rendering and Shaded Working Modes

Surface design, technical inspection, and finished presentation all require a different display mode. Matrix 6 offers multiple modes that



Style Sheets

Many of the tools in Matrix feature our exclusive "Style Sheet" functionality. This means that items like heads and settings, that you build on a regular basis, can be instantly recalled and applied to a new piece. For example, if you create a "channel setting style" with a particular end shape and taper, Style Sheets store those parameters so you can apply that to another design in the future. And History works hand in hand with Style Sheets so the gems you use for that channel setting actually "remember" how the channel was

Library Items for Quick Builds

Creating your design from scratch insures you get exactly what you want but often the base of the design is a standard part or profile. Matrix now offers flexible library parts. And you can call up a part or piece that is very close to meeting your needs then quickly edit it to make it just right.

History Built In

History allows you to change, update and edit a model. This editing method has been used in other CAD products primarily for mechanical engineering as a "History Tree". Matrix 6 has no such "Tree". Instead, our History is contained within the parts you build and is only one click away. This means making design changes is not only easier, it's specially tailored to the design demands of jewelers, and only jewelers, making something beautiful.

Matrix Voted Number 1

Matrix and Revo were

methods even if it takes them longer to do so! We have therefore provided the F6 key as a way to access all the tools that are relevant to the task you are performing. This translates to fast "look up" of the tools you use most often, as well as insight into tools that might save you time or offer further design options you were looking for.

Surface Control for All Users

Each surface you build needs to be perfect, it's essential to great design. Having this kind of control used to require a huge time investment and if you got it right the first time, it was great - but if not, it was back to step one. Matrix 6 changes all that with the an advanced level of surface modeling using tools even beginners find easy! And with History, you

make whatever you are doing easier to see.

.....

Stuller Gem Ordering

.....

Order your diamonds and gemstones from the largest DTC Sightholder and fulfillment house in the USA right from the software.

.....

Stuller CAM Services

.....

Link directly to Stuller Studio Cam Services right from Matrix for convenient and easy manufacturing.

made and changes are just clicks away. You can complete the channel-setting task and explore a new channel look in the same design session.

both voted the number one choice among CAD/CAM professionals in the MJSA Journal Tech Survey.

» [Read More](#)

can now make changes to even complex surfaces on the fly - meaning your design ideas can be realized in just in seconds...not hours.

.....

Following Trends and Anticipating Them

.....

Jewelry is fashion and fashion is always changing. Matrix 6 was developed looking at the latest trends and studying what has been and what is on the way.

New V-Ray Render Engine Built In - 2008 MJSA Innovation Award Winner!

.....

Matrix 6 delivers with a render engine that generates a great looking image in 30 seconds to make the sale as well as generates ultra realistic images at high resolutions for advertising and more. An exclusive version of the powerful V-Ray rendering engine is built right into the software with our own interface and materials library tailored to making jewelry look great. Check out these samples...





[Click to Zoom](#)



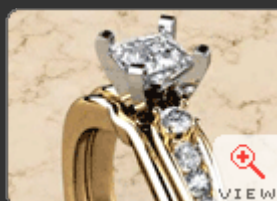
[Click to Zoom](#)



The above image was rendered in under 60 seconds!

New Animation Builder

This new tool automatically strings rendered images together to make an animated movie for advertising and demonstrations. Include a watermark or picture in picture and even fade your movie in and out to add a professional touch. Check out these samples...



New Matrix Viewer

This new and highly interactive 3D viewer allows customers to view and interact with your 3D models outside of the Matrix Software. This tool will add a new dimension to the approval process, and also provide a unique feature to your website.

New Sparkle

Add glamour and life to any render with the new Sparkle builder. Send your new animated render (with sparkle's included!) to your client via email or use it on your website.

More Matrix Features & Capabilities

- **Interactive Builder Controls** - Interactive Builder Controls provide real-time design changes on-screen in immediate response to user input.
- **Weight Calculations** - Using mass properties of solid models and the specific gravity of a given metal, Matrix accurately tells you how much the item will weigh in a variety of metals.
- **Pre-constructed Heads** - Using the Stuller line of heads, we have constructed numerous heads all with the same numbering system as the Stuller catalog.
- **Matrix Art** - This fully-featured height field from bitmap modeling program is integrated into Matrix.
- **Gem Reporter** - Real time total weight is displayed on-screen in the new Gem Reporter.
- **Custom Gem Builder** - The Custom Gem Builder adds custom shapes to the interactive gem library.
- **Blend Targets** - Makes creation of complex, free-flowing surfaces faster and more user-friendly.
- **Eternity Ring Builder** - Quickly and easily build the perfect Eternity Ring with full control over every aspect of the gems and the band.
- **Ring Resizing Builder** - This powerful tool allows you to create any ring size from one master ring while minimizing distortion and preserving gem placement.
- **Knot Builder** - Celtic knots and braids continue to be popular in all types of jewelry so Matrix includes a Knot Builder to easily generate complex interweave knots from just a few mouse clicks.
- **Pattern Builder** - The new Pattern Builder creates a customized kaleidoscope of patterns using any two objects or sets of objects the user inputs into the builder.
- **Signet Ring Builders** - Virtually endless signet ring designs are possible with every shape and size.
- **Project Manager** - 3D projects get large when creating complex models and variations but the Project Manager keeps it all organized.



Matrix Design Gallery

Showcasing the endless possibilities of Matrix 3D Jewelry Design Software, this gallery features jewelry designed and rendered using Matrix. Most designs were created by actual Gemvision users!

» [View Matrix Gallery](#)



US Success Stories

Whether you are a small retail store or a large operation doing your own manufacturing, see how businesses just like yours have successfully implemented Gemvision technology in these Success Stories originally published in major jewelry magazines. » [US Success Stories](#)



UK Success Stories

See how UK businesses just like yours have successfully implemented Gemvision technology in these Success Stories. » [UK Success Stories](#)

All Gemvision products are compatible with **Windows 7** and more.